

---

## VXI*plug&play*-Compatible Software Kit NI-VISA™ for Macintosh/Power Macintosh

Thank you for purchasing a National Instruments controller. Although the Macintosh is not a VXI*plug&play* framework, National Instruments provides a VISA I/O driver library consistent with the VXI*plug&play*-standard VISA libraries on other frameworks. You can run VXI*plug&play*-compatible software from other frameworks on the Macintosh with just the need to recompile. NI-VXI and NI-488.2 ensure that your controller can run the installed base of instrument drivers and applications. The NI-VXI and/or NI-488.2 driver software components are included with your controller, and the documentation that accompanies your controller describes how to install and use them. This VXI*plug&play*-compatible software kit includes NI-VISA, which is the National Instruments implementation of VISA, and related documentation. This document describes how to install your NI-VISA software.

The NI-VISA software in this kit contains software for both the 680x0 and PowerPC (PPC) Macintosh computers. With NI-VISA installed on your computer, you can use most VXI*plug&play* software on a 680x0 or a PPC. This includes instrument drivers from other frameworks that are included with VXI*plug&play*-compatible instruments from a variety of vendors. You can re-use native G-language instrument drivers directly on the Macintosh, while C language drivers must be recompiled first using a supported compiler.

Please also see the `readme.txt` file included with your software for the most up-to-date information about this release of NI-VISA.

## Components

The VXI*plug&play*-compatible software kit contains the following software and documentation components.

## Software

- VISA 1.0 shared library
- VISA 1.0 GPIB-VXI component

## Documentation

- *NI-VISA Programmer Reference Manual*
- *NI-VISA User Manual*

## Supported Application Development Environments

The following Application Development Environments (ADEs) are supported with this release of NI-VISA for Macintosh/Power Macintosh.

- LabVIEW version 4.0
- Metrowerks CodeWarrior version 7.0 (PPC only)
- Macintosh Programmer's Workshop (MPW) Development Environment Pro #18 (680x0 only)
  - Symantec Compiler (SC) version 8.0.3c3
  - Ilink version 2.0b1
  - MakeFlat version 1.0b1



**Note:** *Although NI-VISA has been tested and found to work with these ADEs, other ADEs or higher versions of the ADEs listed above may also work.*

## Installation Procedures

### Step 1. Install Your NI-VXI/NI-488.2 Driver Software

The installation method varies depending on the type of controller you have purchased, as shown in the following table. Refer to the documentation that came with your controller for detailed installation instructions.

Controller	Installation
VXI-NB2040 MXI controller	Install the NI-VXI for Macintosh software.
GPIB-VXI/C controller or any National Instruments GPIB board that has a Macintosh driver	Install the NI-488.2 for Macintosh software.

If you plan to use NI-VISA with only the serial ports on your computer, you do not need to install NI-VXI or NI-488.2.

## Step 2. Install Your NI-VISA Software

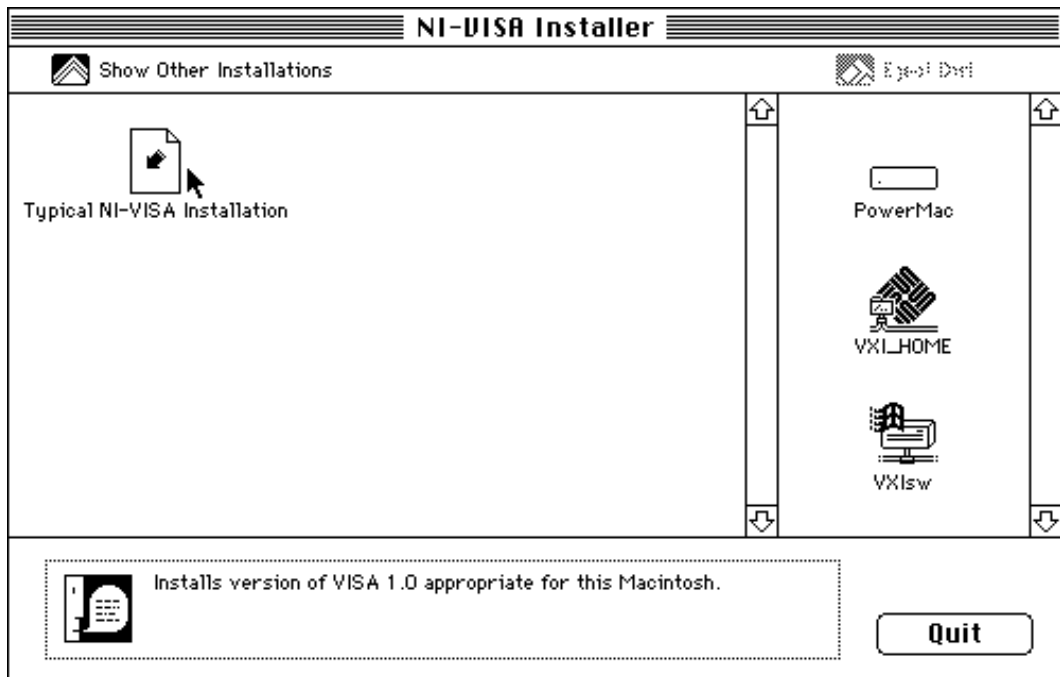
The remainder of this document describes how to install the NI-VISA software on your controller.

### Start the Installation Program

Insert the NI-VISA diskette into your disk drive. Run the NI-VISA installer by clicking on the **NI-VISA Installer** icon.

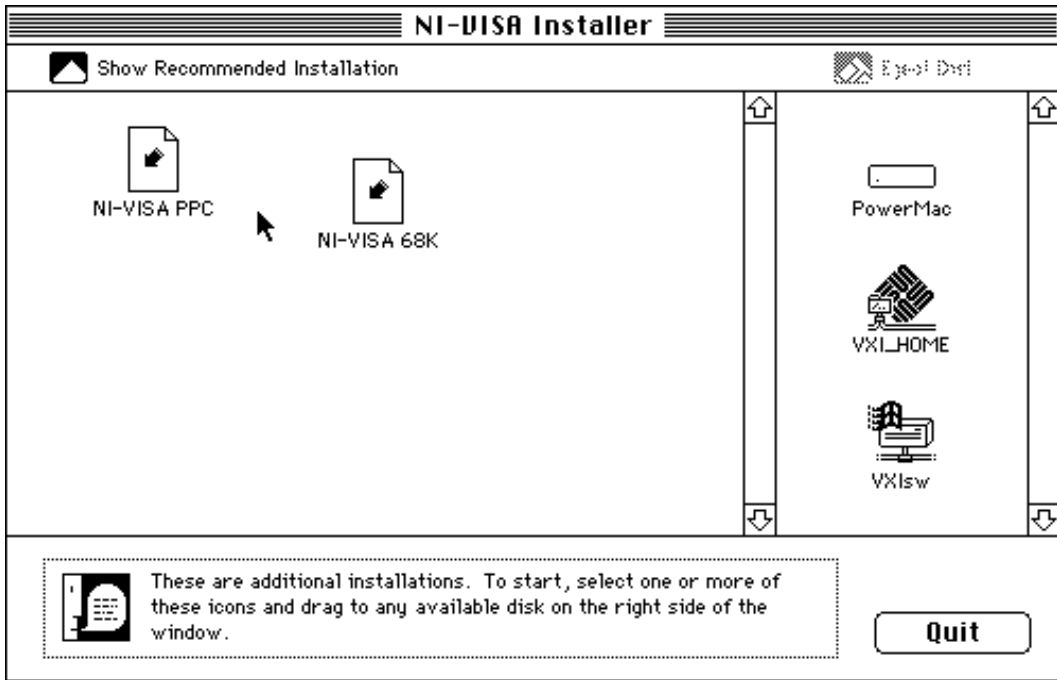
### Installation Options

The following screen is a typical main menu.



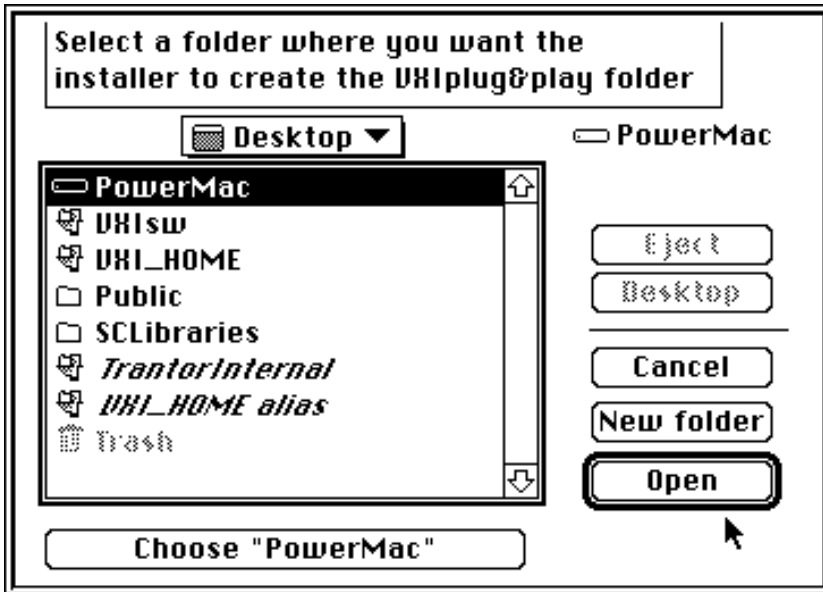
The typical NI-VISA installation determines whether your computer is a 680x0 or PPC and installs the appropriate files. Select **Typical NI-VISA Installation** and move it to the primary drive of your computer. This action installs the VISA shared library in the `Extensions` folder of that drive. If you are installing NI-VISA on a PPC, the NI-VISA Installer program also places the GPIB-VXI shared library in the `Extensions` folder. If you are installing NI-VISA on a 680x0, you will find only the VISA shared library in the `Extensions` folder, because the code that handles the GPIB-VXI functionality is statically linked into the VISA shared library.

You can also select a computer-specific installation instead of the **Typical NI-VISA Installation** option. If you want to install specifically for a 680x0 or PPC, click on the **Show Other Installations** icon in the main menu. The following dialog box appears.



For either option, the NI-VISA Installer program places the NI-VISA shared library in the Extensions folder of the drive you selected. If you selected **NI-VISA PPC**, the GPIB-VXI shared library is installed in the same folder.

After this part of the installation completes, a dialog box appears on the screen similar to the following.



Select a folder where you want the NI-VISA Installer program to create the `VXIplug&play` folder. The `VXIplug&play` folder contains files used by the NI-VISA shared library as well as header files for ANSI C development. The NI-VISA Installer also creates an alias to the `VXIplug&play` folder called `VXIplug&play` in the Preferences folder of the primary drive of your computer. The NI-VISA shared library uses this alias to locate the `VXIplug&play` folder.

## Exiting the Installation Program

The following screen appears after a successful installation.



Click on the **Quit** button to exit the NI-VISA Installer program.

## Updating the Installation Program

You can run the NI-VISA Installer program again to make additional changes.

áZZYF1Esä

ZZYF1E

\*321218A

321218A-01

March 1996